


## FICHES D' IDENTIFICAZIONE EASY KART 100



### CARATTERISTICHE TECNICHE

MOTORE	DUE TEMPI	COSTRUTTORE	B.M.B s.r.l
RAFFREDDAMENTO	ARIA	MARCA	EASYKART
CILINDRATA	100 cc	MODELLO	EKJ
CORSA	48.5 mm	TIPO	J-X
ALESAGGIO MASSIMO	51.23 mm		
POTENZA	20 Hp		
REGIME DI ROTAZIONE	15.500 rpm ~		
TIPO AMMISSIONE	LAMELLARE		
CARBURATORE	A FARFALLA Ø 22,4 mm MAX		
ACCENSIONE	ELETTRONICA		
AVVIAMENTO	ELETTRICO		
FRIZIONE	CENTRIFUGA		

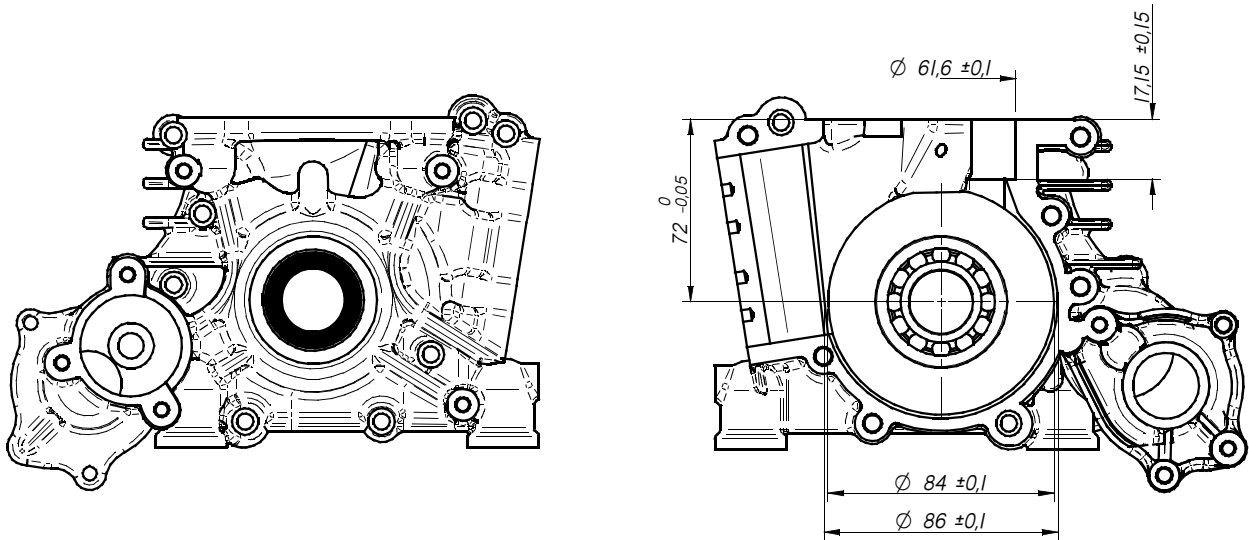


**B.M.B s.r.l.**  
**BOSCOLO CARLO**  
Amministratore

Timbro e firma del costruttore

# SEMICARTER DESTRO

MATERIALE = ALLUMINIO

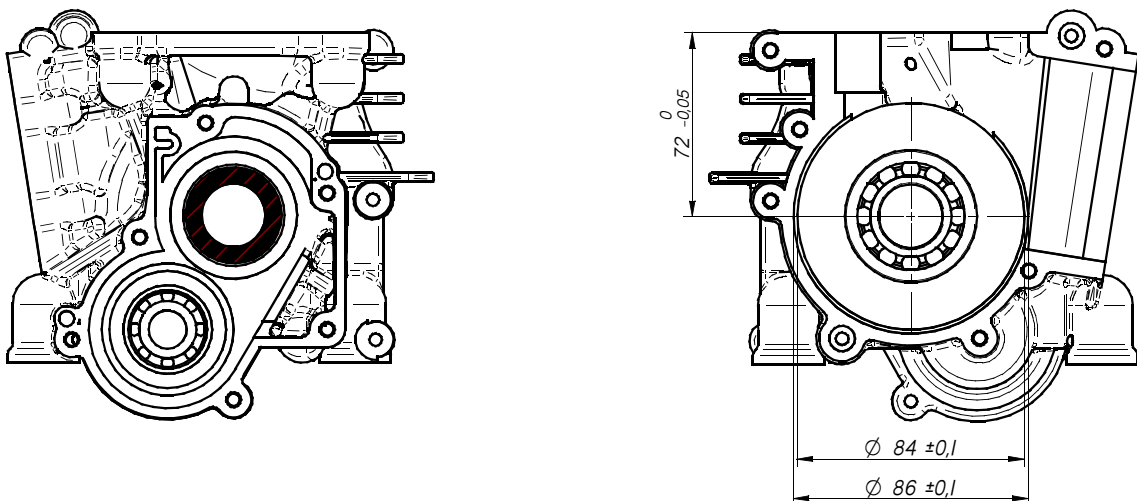


PARAOLIO 40x25x7CON DOPPIO LABBRO IN TEFLON

CUSCINETTO 6205 C4 CON GABBIA IN POLIAMIDE

# SEMICARTER SINISTRO

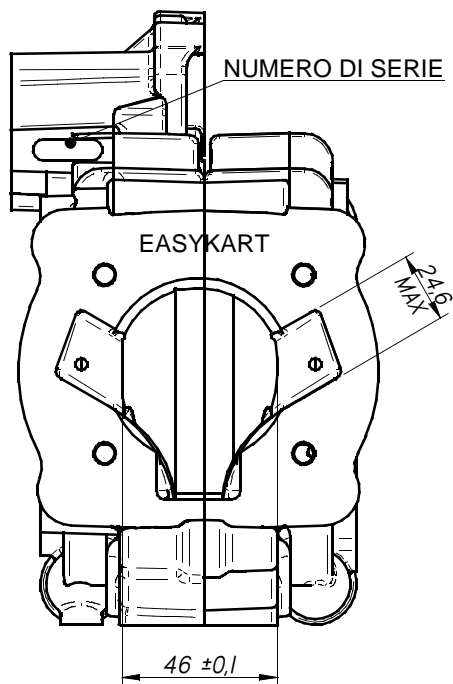
MATERIALE = ALLUMINIO



CUSCINETTO 6202 C4 CON GABBIA IN POLIAMIDE  
PARAOLIO 40x25x7CON DOPPIO LABBRO IN TEFLON

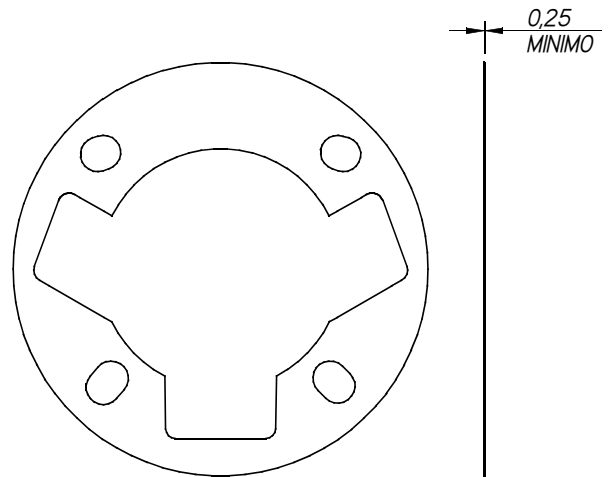
CUSCINETTO 6205 C4 CON GABBIA IN POLIAMIDE

## BASAMENTO



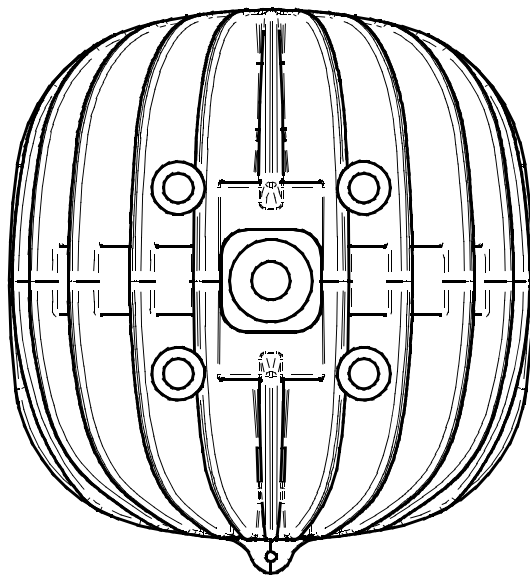
E' VIETATO INTERPORRE SPESSORI O GUARNIZIONI  
TRA I DUE SEMICARTER

## GUARNIZIONE

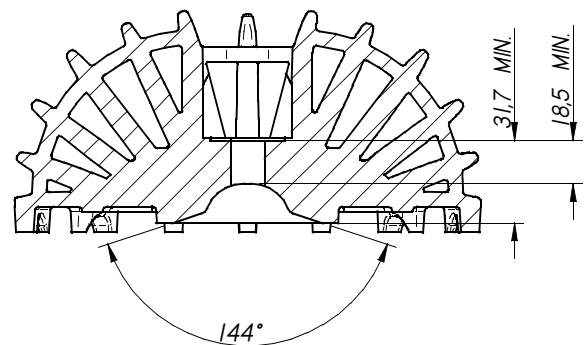


NON SONO AMMESSI MATERIALI DIVERSI  
DALLA CARTA TRATTATA

## TESTA



MATERIALE = ALLUMINIO

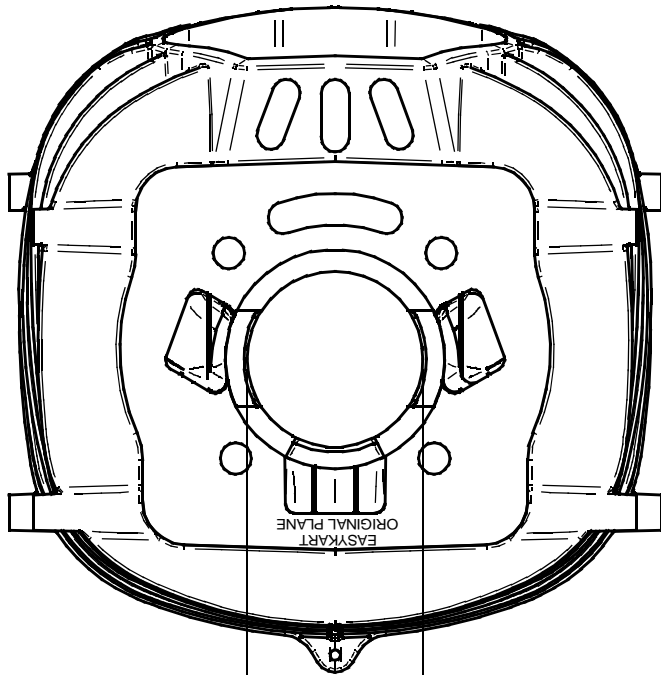


VOLUME CAMERA DI COMBUSTIONE = 10,7 cm<sup>3</sup> MIN.  
(CON VOLUMETER ED INSERTO)

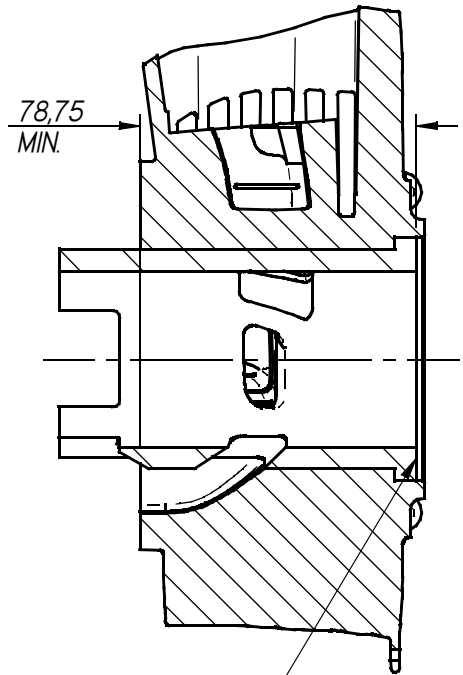
VOLUME CAMERA DI COMBUSTIONE = 8,8 cm<sup>3</sup> MIN.  
(CON MOTORE MONTATO-PIST. AL PMS ED INSERTO)

SQUISH MINIMO = 0,75 mm  
RILEVATO CON STAGNO DA Ø1,5 mm

# CILINDRO

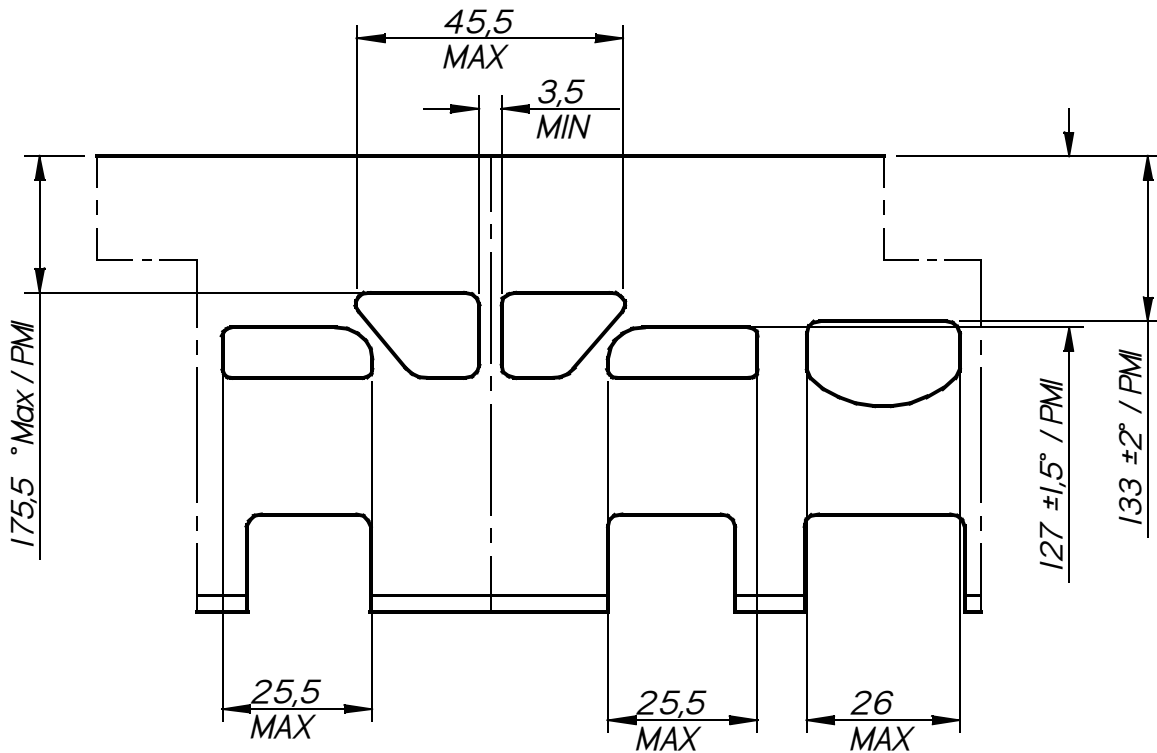


ALESAGGIO MAX. 51,23



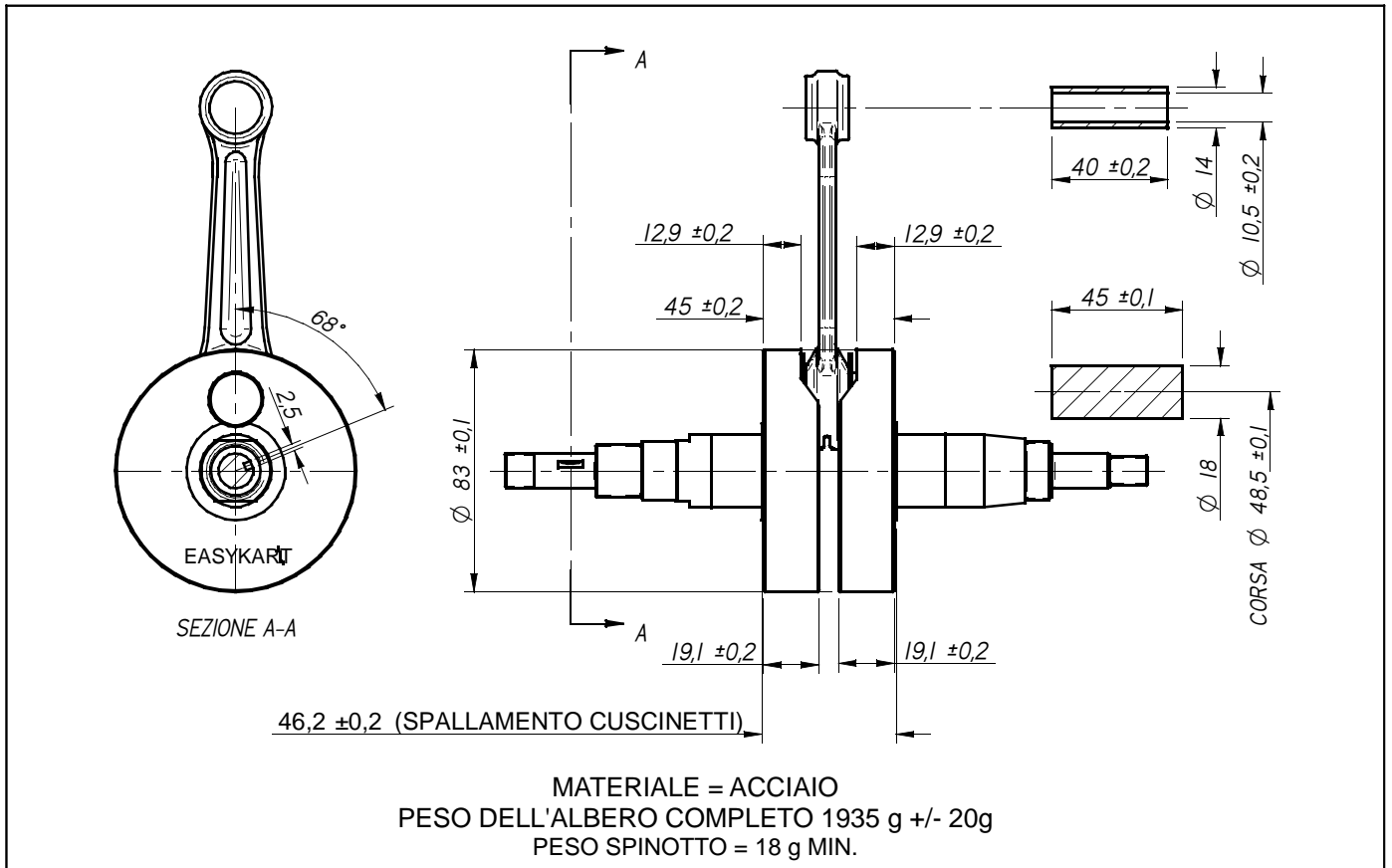
78,75  
MIN.

E' VIETATO L'UTILIZZO  
DI SPESSORI AGGIUNTIVI  
TRA IL PIANO CILINDRO  
E IL PIANO TESTA

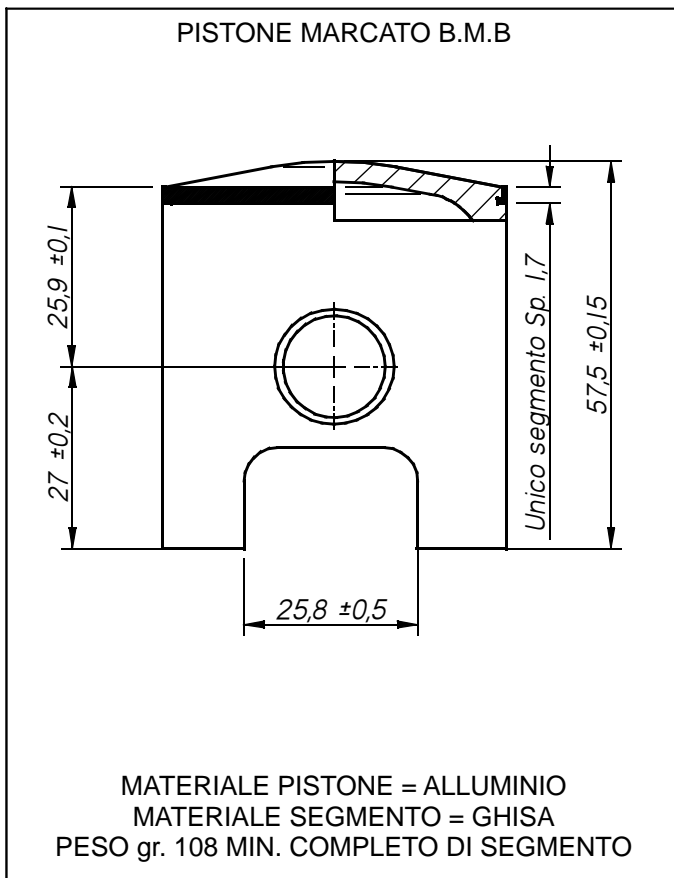


LETTURA ANGOLARE CON SPESSIMETRO DA 0,2X10  
MATERIALE DEL CILINDRO = ALLUMINIO      MATERIALE DELLA CANNA = GHISA  
PESO CILINDRO COMPLETO = 2700 g. +/- 30g

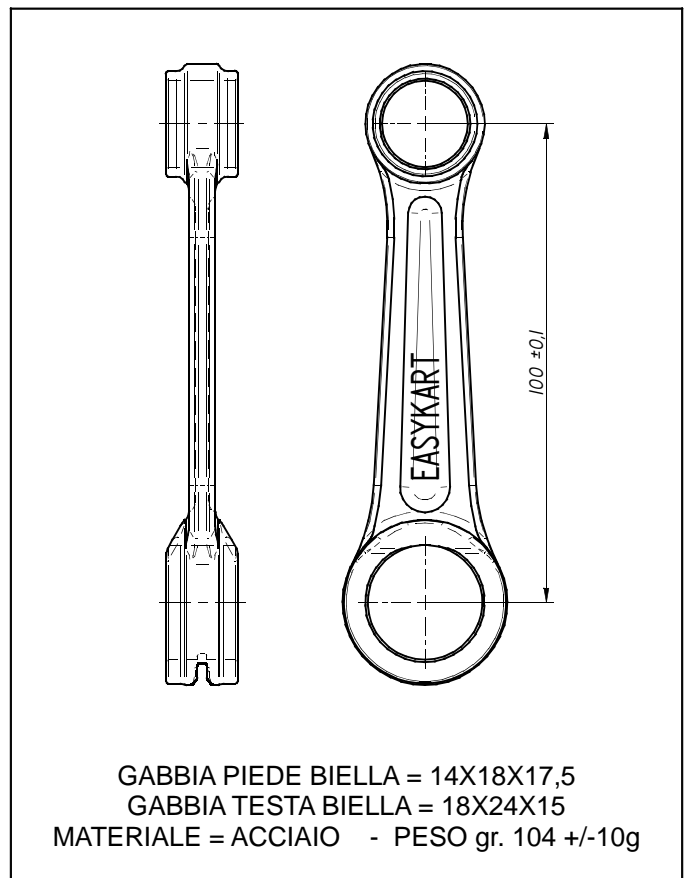
# ALBERO MOTORE



## PISTONE

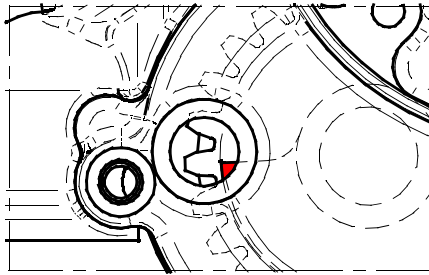
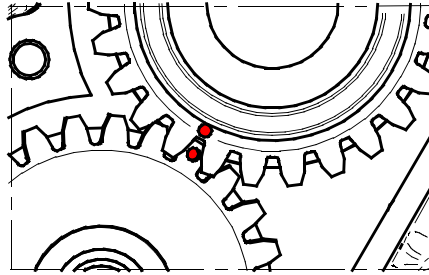


## BIELLA

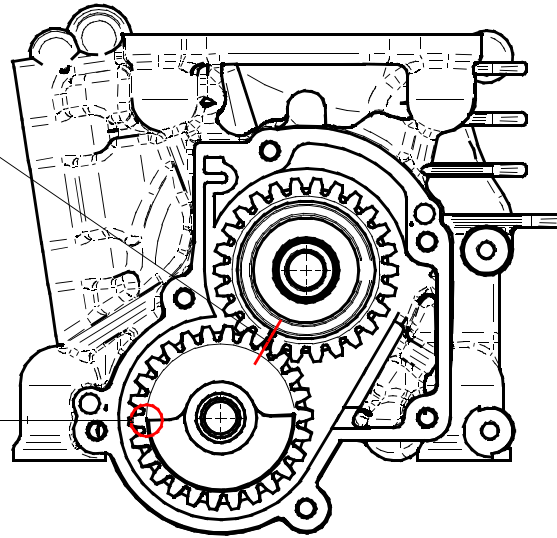


# CONTRALBERO

FASE = PUNTO MORTO SUPERIORE



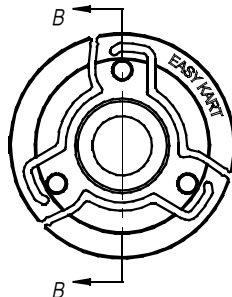
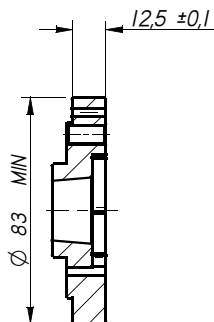
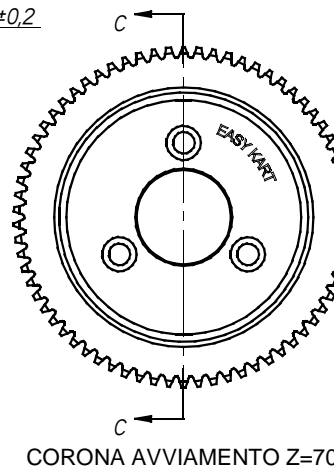
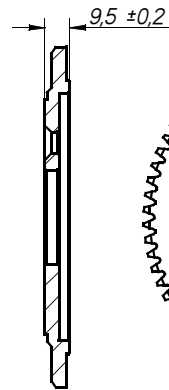
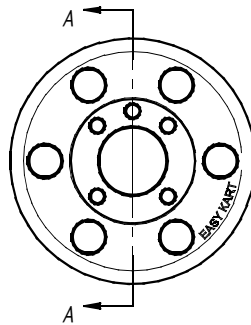
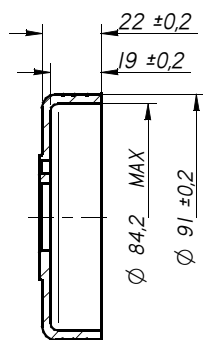
POSIZIONAMENTO CONTRALBERO  
AL PMS VISTO DAL LIVELLO OLIO



CONTRALBERO = Z 26 PESO = 240 g. +/-10g

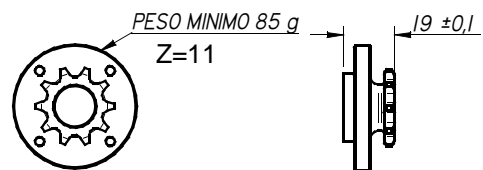
INGRANAGGIO PRIMARIO = Z 26 PESO = 69 g. +/-5g

# FRIZIONE



SEZIONE C-C

CORONA AVVIAMENTO Z=70

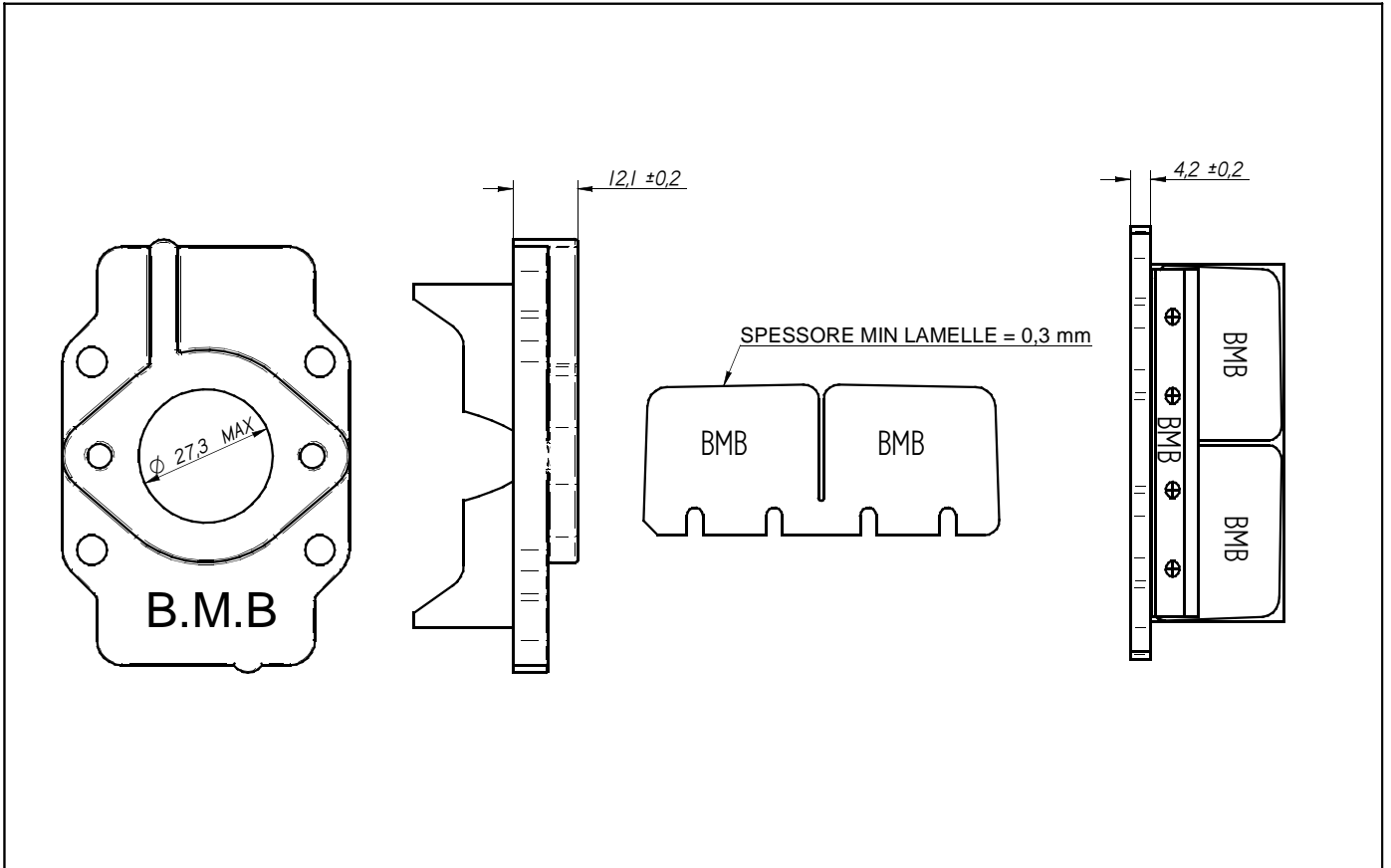


CAMPANA COMPLETA MAT. ACCIAIO PESO = 360 g. +/-10g

FRIZIONE MAT. ACCIAIO PESO = 400 g. MIN.

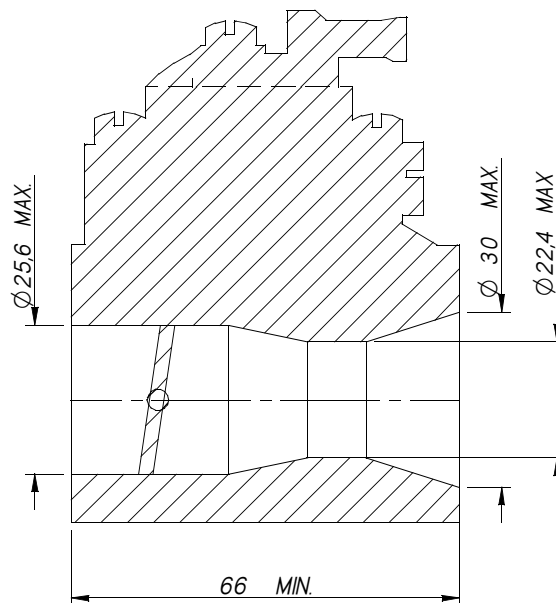
CORONA MAT. ALLUMINIO PESO = 190 g. +/-10g

# PACCO LAMELLARE



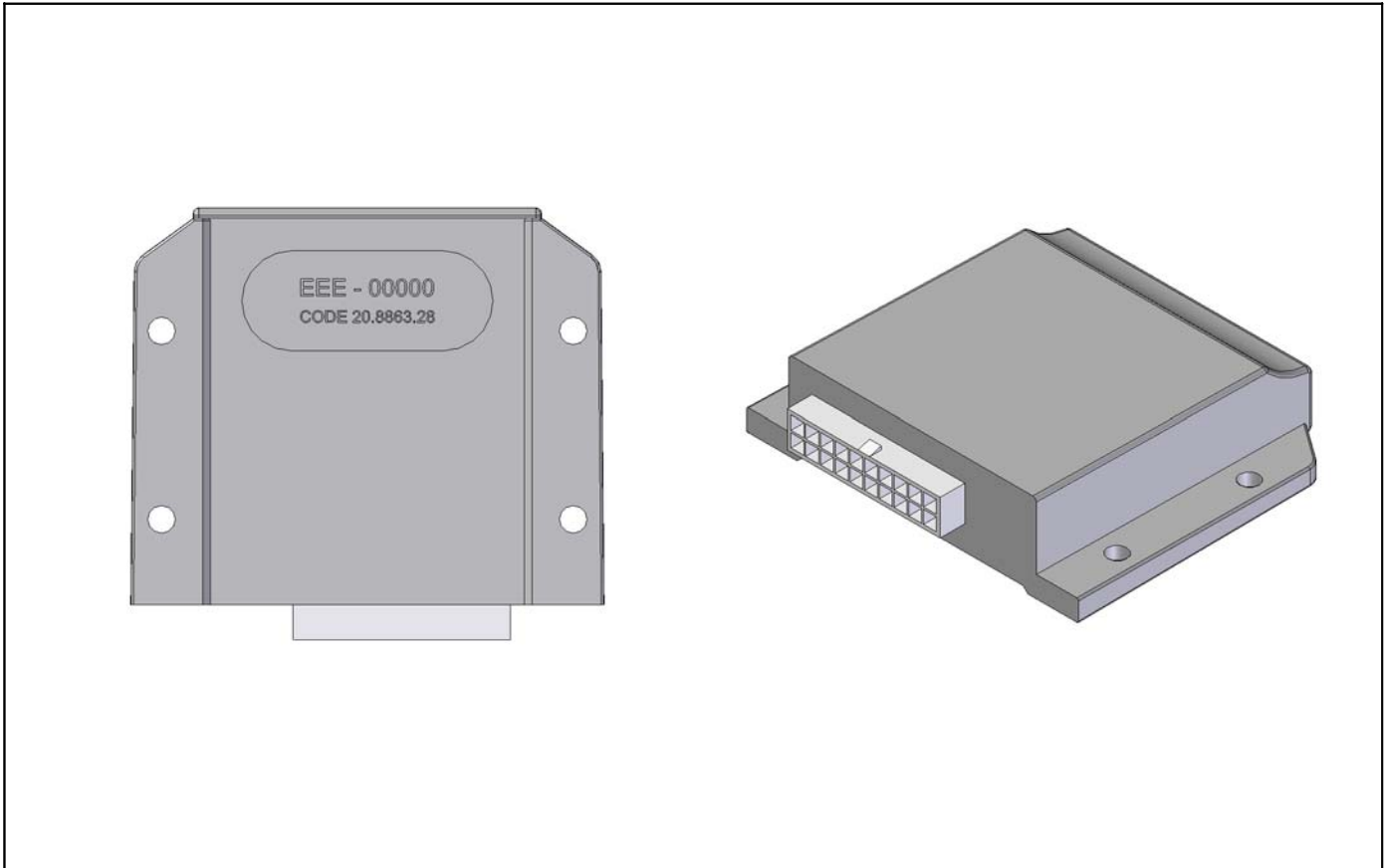
# CARBURATORE

TILLOTSON mod. HL-384 A - GETTO FISSO DEL MASSIMO E REGOLABILE DEL MINIMO

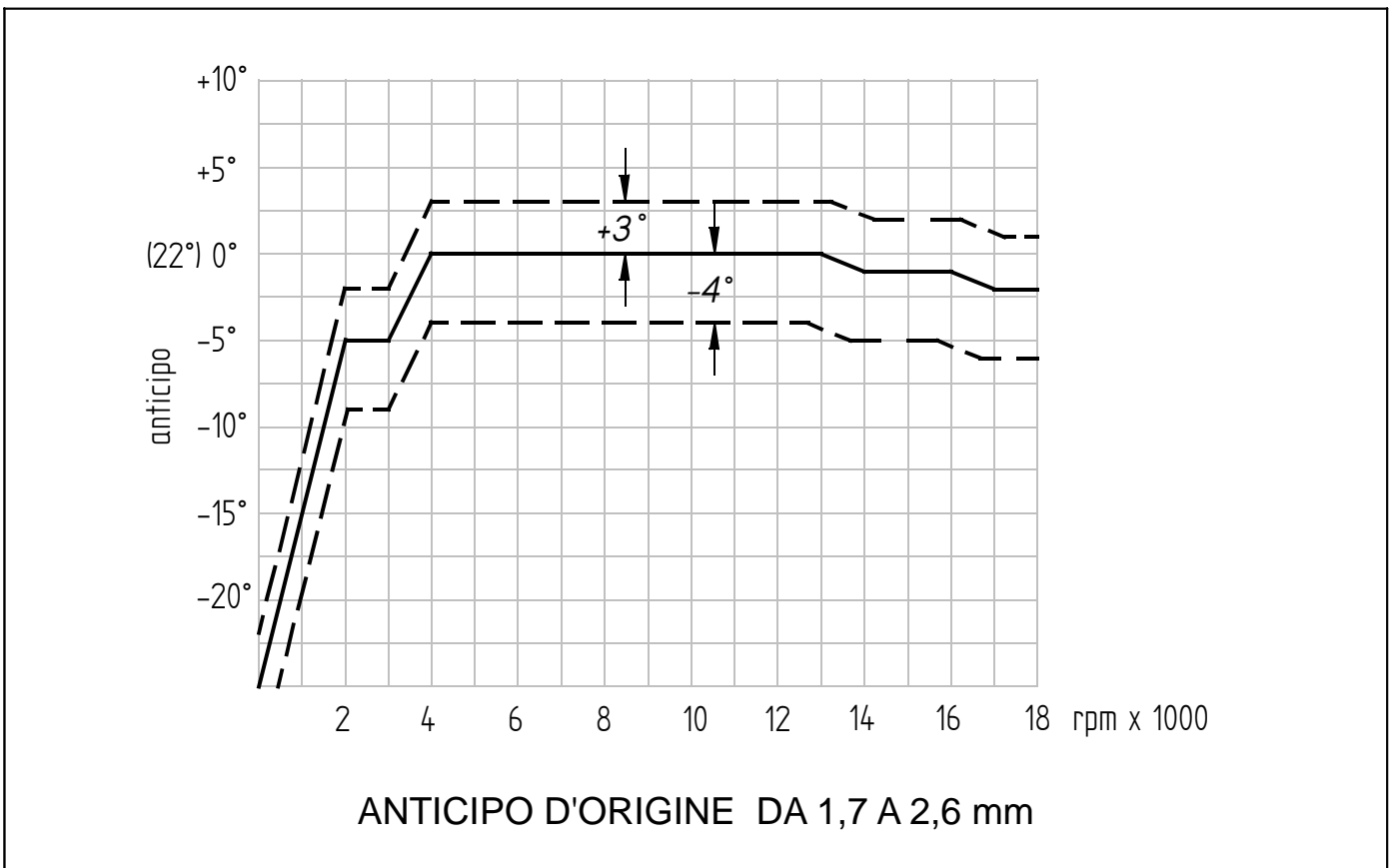


UTILIZZARE ESCLUSIVAMENTE PARTI ORIGINALI  
SONO VIETATE LAVORAZIONI E/O LUCIDATURA DEL CONDOTTO  
L'ASPIRAZIONE DELL'ARIA DEVE AVVENIRE ESCLUSIVAMENTE DALLE PRESE D'ARIA DEL FILTRO

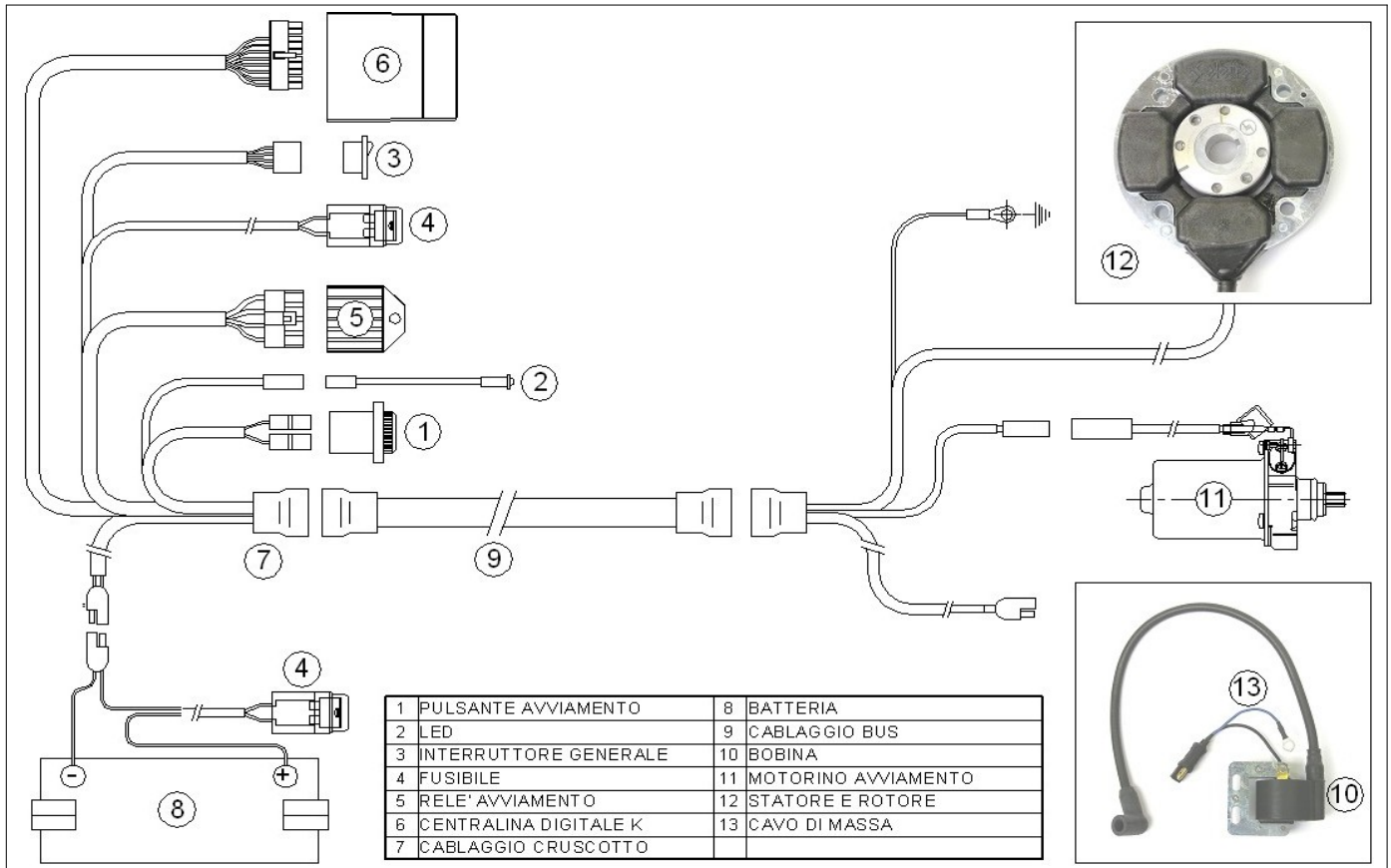
# CENTRALINA



## DIAGRAMMA ANTICIPO ACCENSIONE



# SCHEMA IMPIANTO ELETTRICO



## COLLETTORE e SILENZIATORE DI SCARICO

