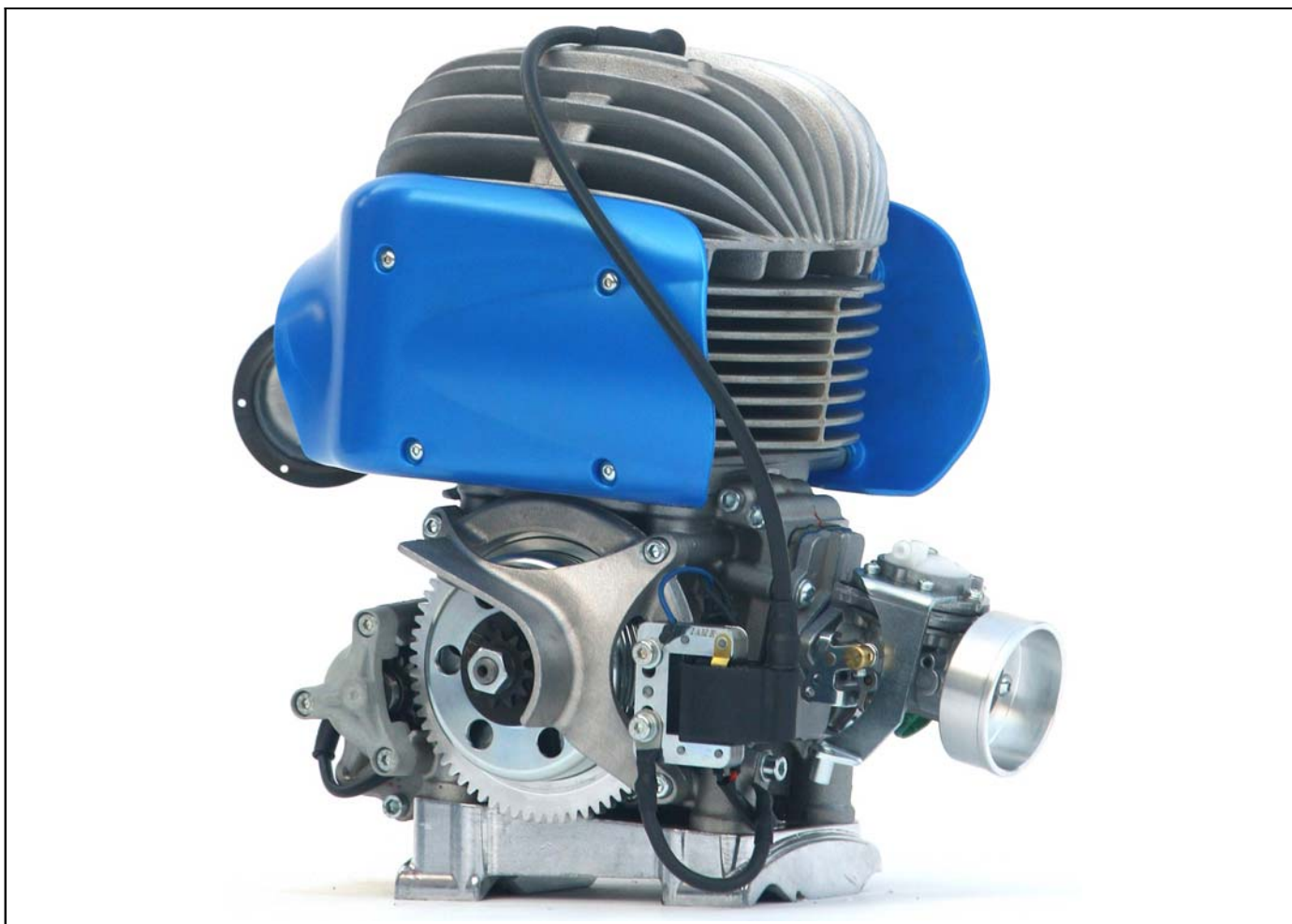



## FICHES D' IDENTIFICAZIONE EASY KART 125



### CARATTERISTICHE TECNICHE

MOTORE	DUE TEMPI	COSTRUTTORE	B.M.B s.r.l
RAFFREDDAMENTO	ARIA	MARCA	EASYKART
CILINDRATA	125 cc	MODELLO	EKA
CORSA	54 mm	TIPO	A-X
ALESAGGIO MASSIMO	54,28 mm		
POTENZA	26 Hp		
REGIME DI ROTAZIONE	16.000 rpm ~		
TIPO AMMISSIONE	LAMELLARE		
CARBURATORE	A FARFALLA Ø 22,4 mm MAX		
ACCENSIONE	ELETTRONICA		
AVVIAMENTO	ELETTRICO		
FRIZIONE	CENTRIFUGA		

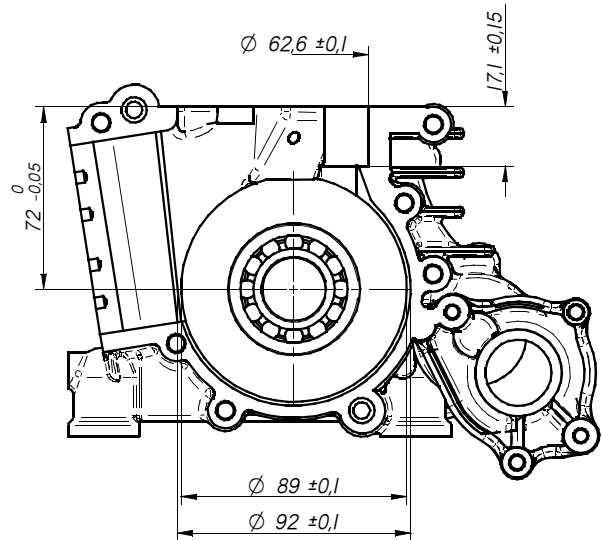
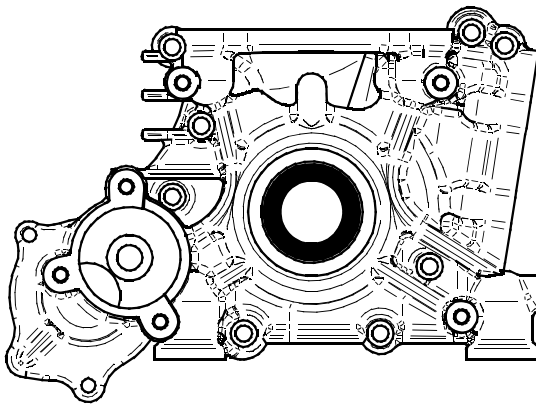


**B.M.B s.r.l.**  
**BOSCOLO GARLO**  
Amministratore

Timbro e firma del costruttore

# SEMICARTER DESTRO

MATERIALE = ALLUMINIO

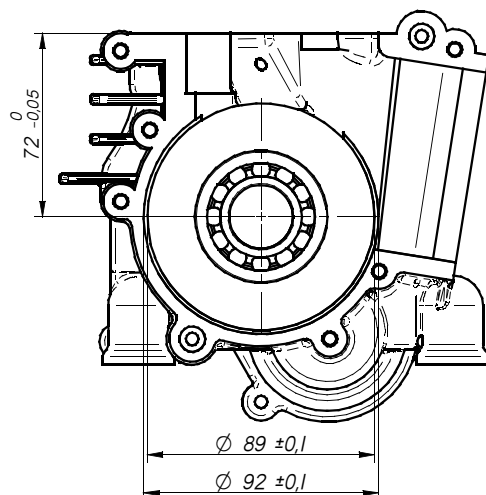
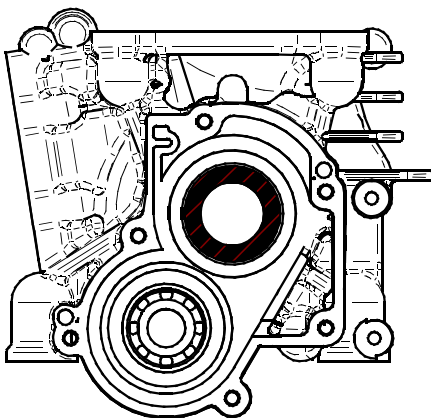


PARAOLIO 40x25x7CON DOPPIO LABBRO IN TEFLON

CUSCINETTO 6205 C4 CON GABBIA IN POLIAMIDE

# SEMICARTER SINISTRO

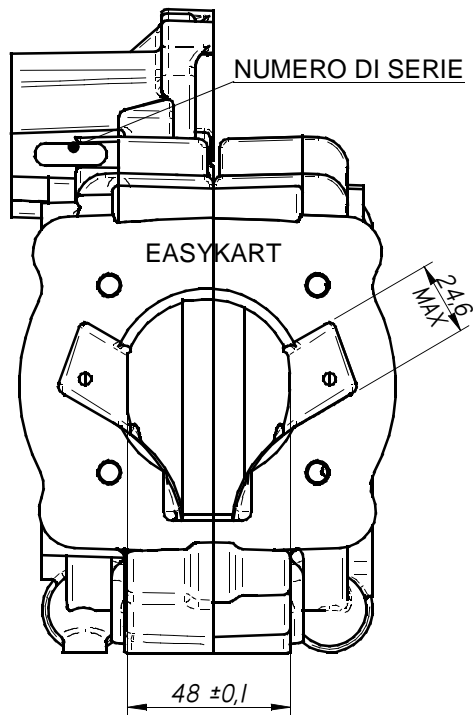
MATERIALE = ALLUMINIO



CUSCINETTO 6202 C4 CON GABBIA IN POLIAMIDE  
PARAOLIO 40x25x7CON DOPPIO LABBRO IN TEFLON

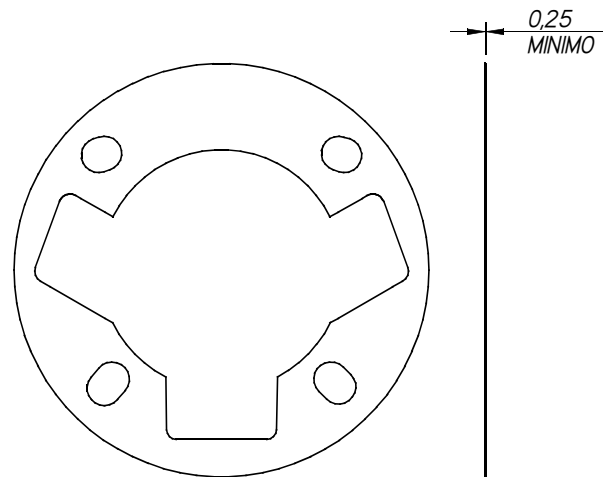
CUSCINETTO 6205 C4 CON GABBIA IN POLIAMIDE

## BASAMENTO



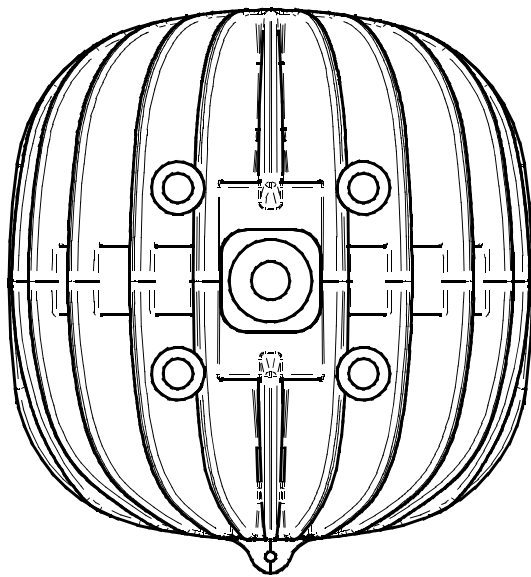
E' VIETATO INTERPORRE SPESSORI O GUARNIZIONI  
TRA I DUE SEMICARTER

## GUARNIZIONE

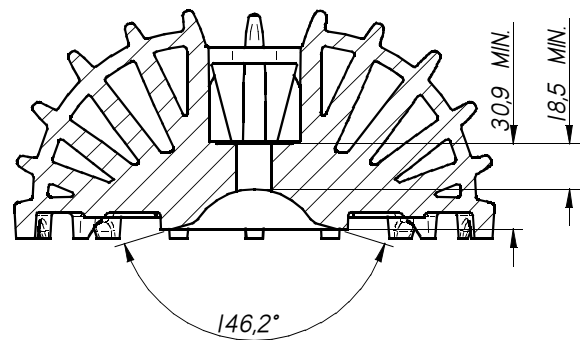


NON SONO AMMESSI MATERIALI DIVERSI  
DALLA CARTA TRATTATA

## TESTA



MATERIALE = ALLUMINIO

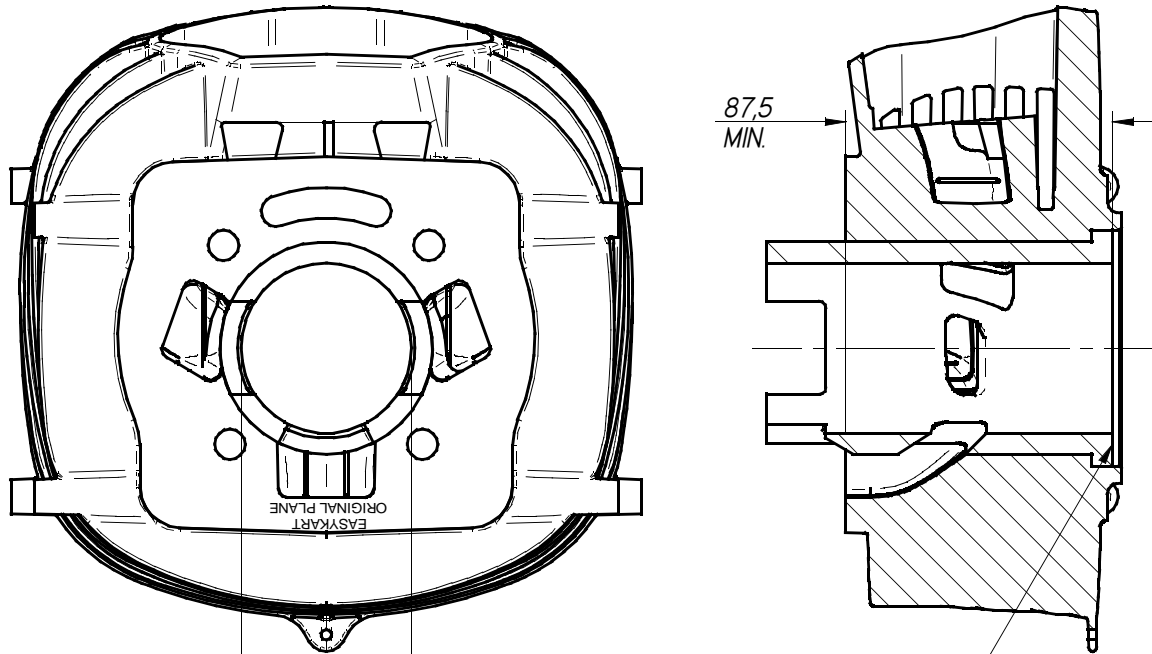


VOLUME CAMERA DI COMBUSTIONE = 13 cm<sup>3</sup> MIN.  
(CON VOLUMETER ED INSERTO)

VOLUME CAMERA DI COMBUSTIONE = 10,9 cm<sup>3</sup> MIN.  
(CON MOTORE MONTATO-PIST. AL PMS ED INSERTO)

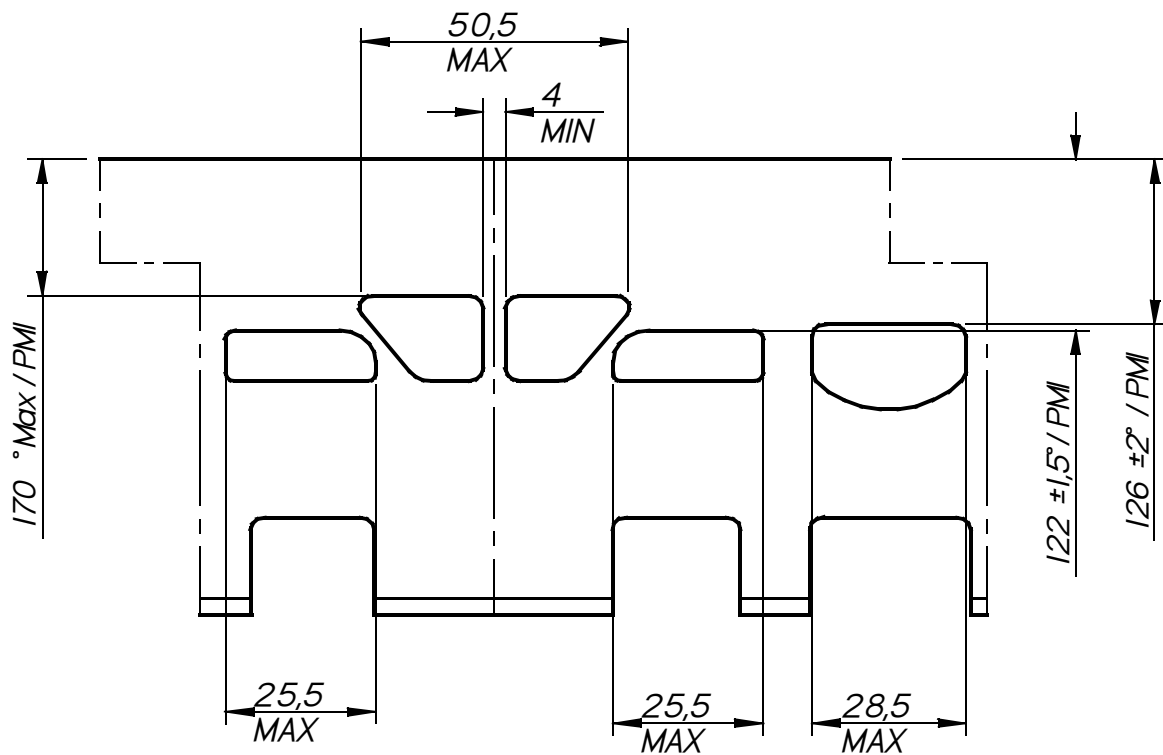
SQUISH MINIMO = 0,90 mm  
RILEVATO CON STAGNO DA Ø1,5 mm

# CILINDRO



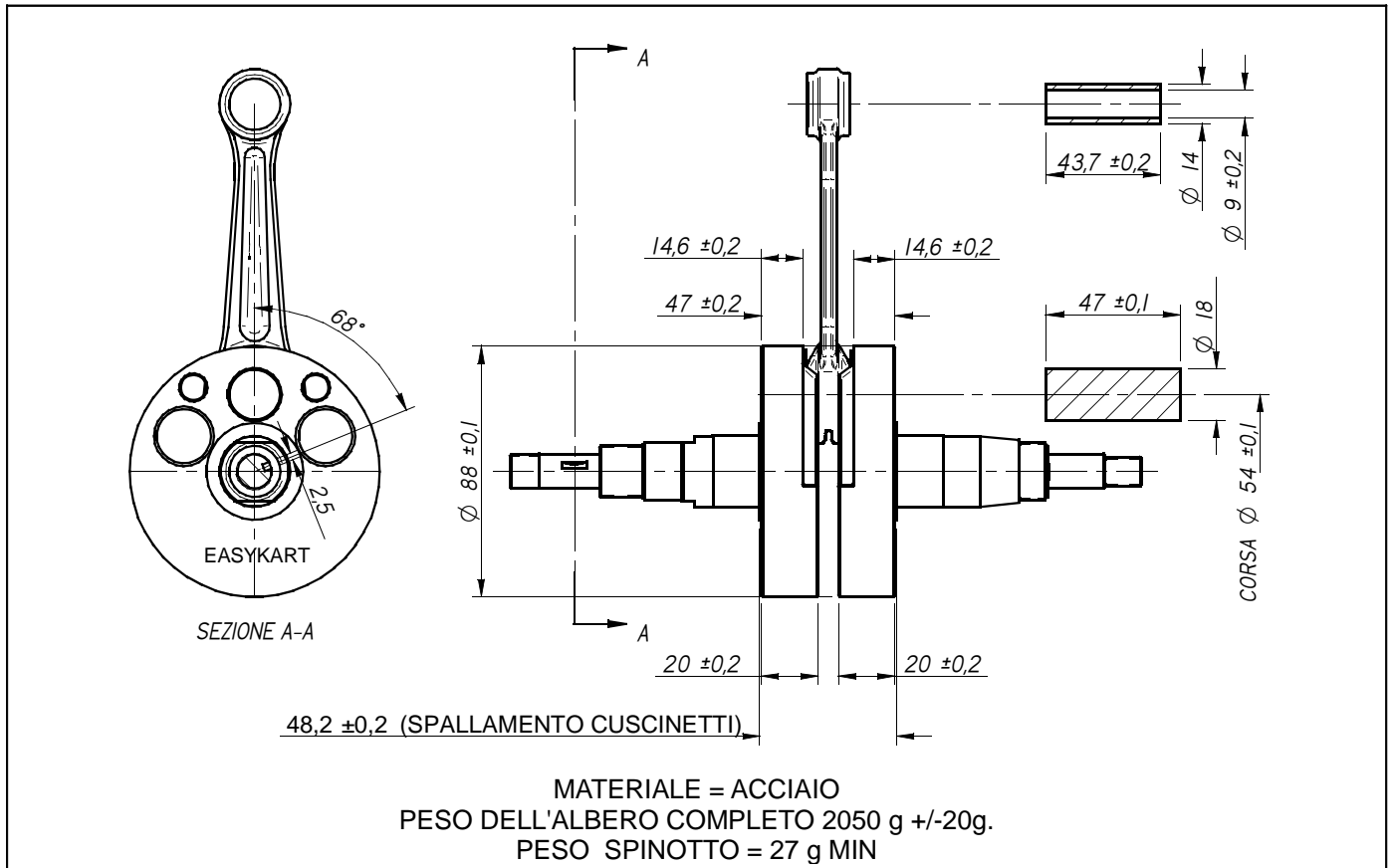
ALESAGGIO MAX.  $\phi$  54,28

E' VIETATO L'UTILIZZO  
DI SPESSORI AGGIUNTIVI  
TRA IL PIANO CILINDRO  
E IL PIANO TESTA

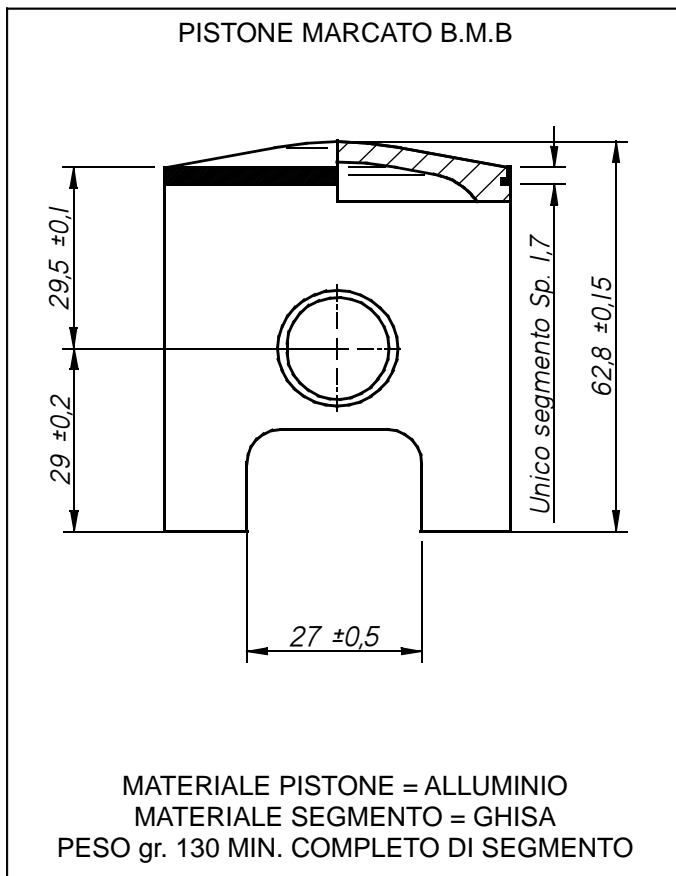


LETTURA ANGOLARE CON SPESSIMETRO DA 0,2X10  
MATERIALE DEL CILINDRO = ALLUMINIO      MATERIALE DELLA CANNA = GHISA  
PESO CILINDRO COMPLETO = 3690g. +/-30g

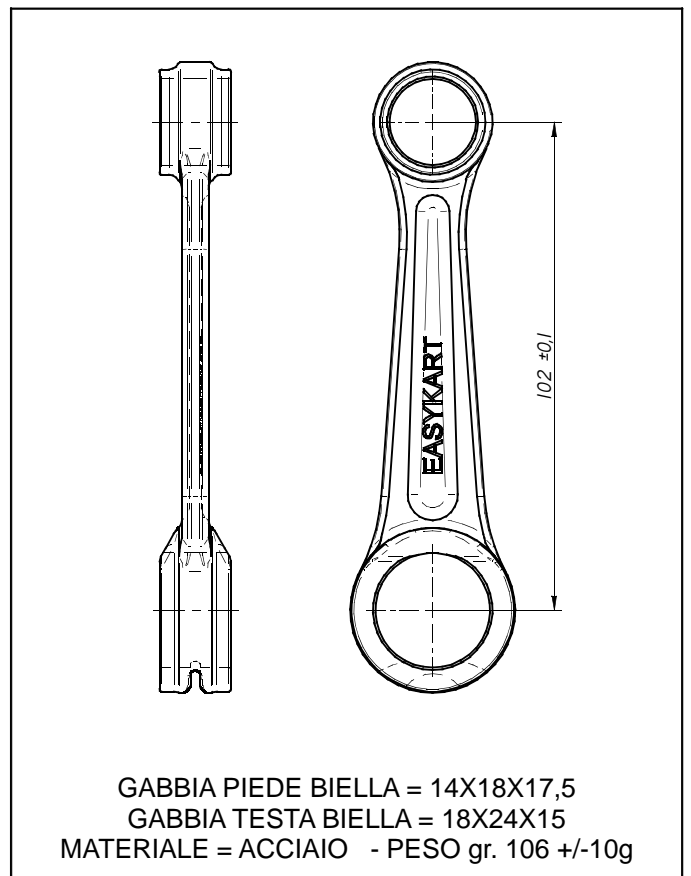
# ALBERO MOTORE



## PISTONE

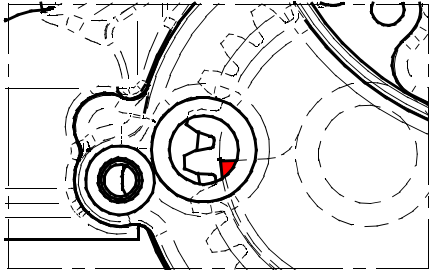
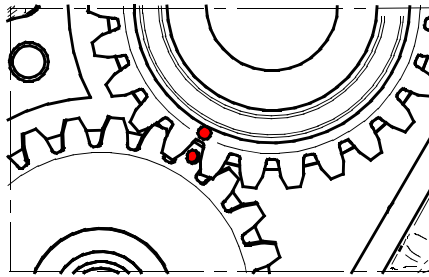


## BIELLA

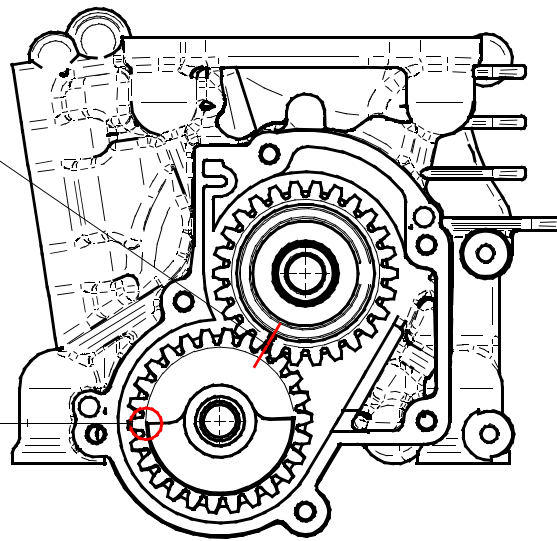


# CONTRALBERO

FASE = PUNTO MORTO SUPERIORE



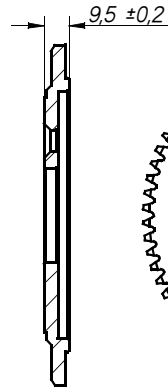
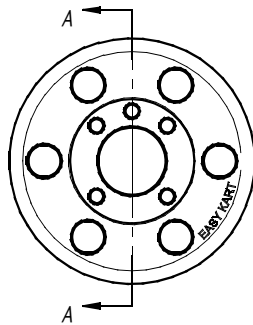
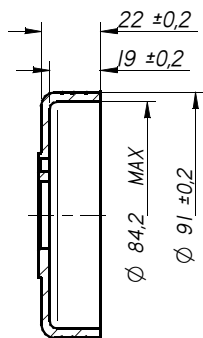
POSIZIONAMENTO CONTRALBERO  
AL PMS VISTO DAL LIVELLO OLIO



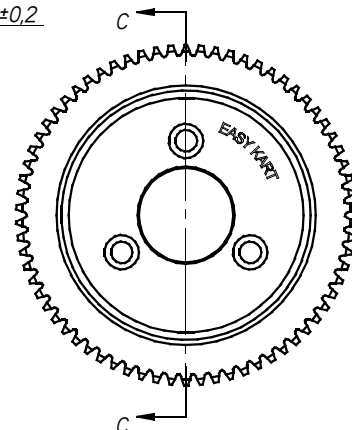
CONTRALBERO = Z 26 PESO = 240 g. +/-10g

INGRANAGGIO PRIMARIO = Z 26 PESO = 69 g. +/-5g

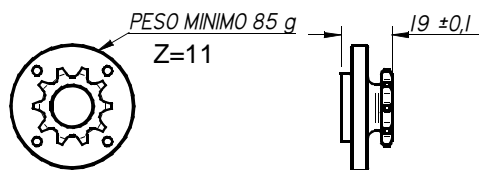
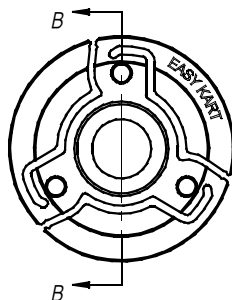
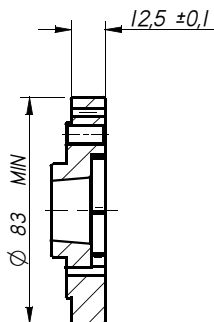
# FRIZIONE



SEZIONE C-C



CORONA AVVIAMENTO Z=70



PESO MINIMO 85 g

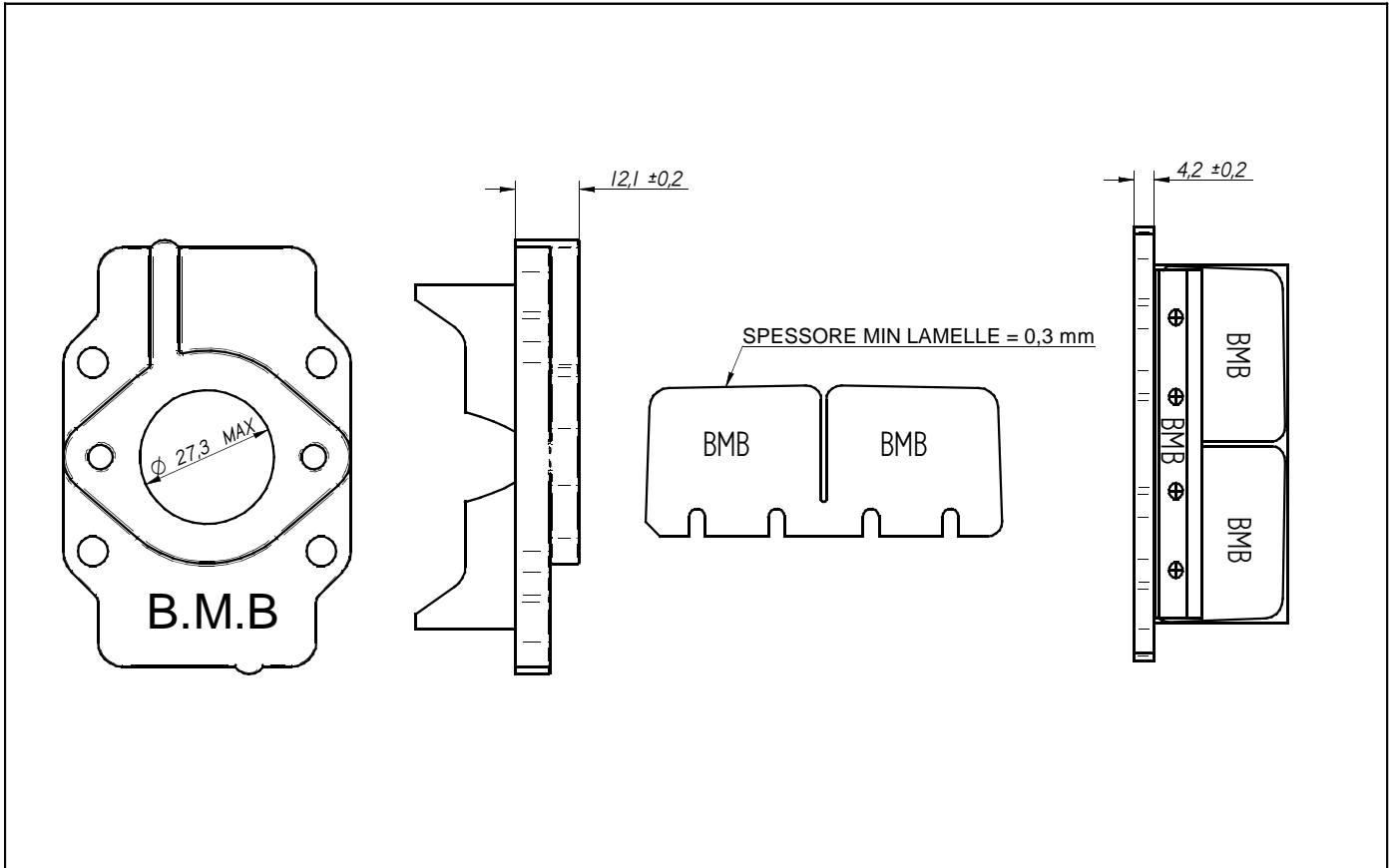
Z=11

CAMPANA COMPLETA MAT. ACCIAIO PESO = 360 g. +/-10g

FRIZIONE MAT. ACCIAIO PESO = 400 g. MIN.

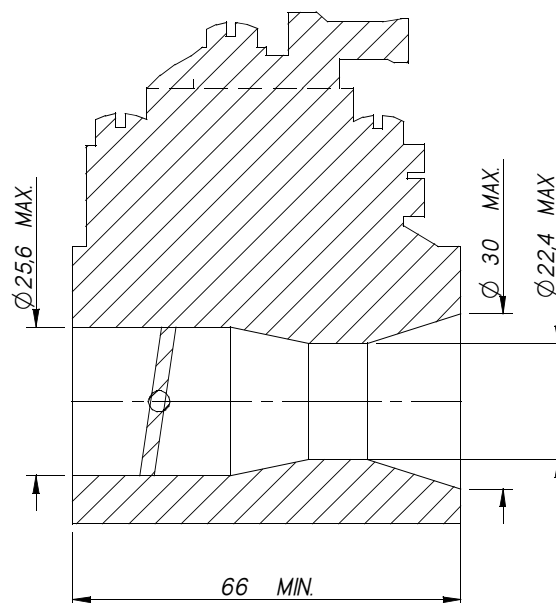
CORONA MAT. ALLUMINIO PESO = 190 g. +/-10g

# PACCO LAMELLARE



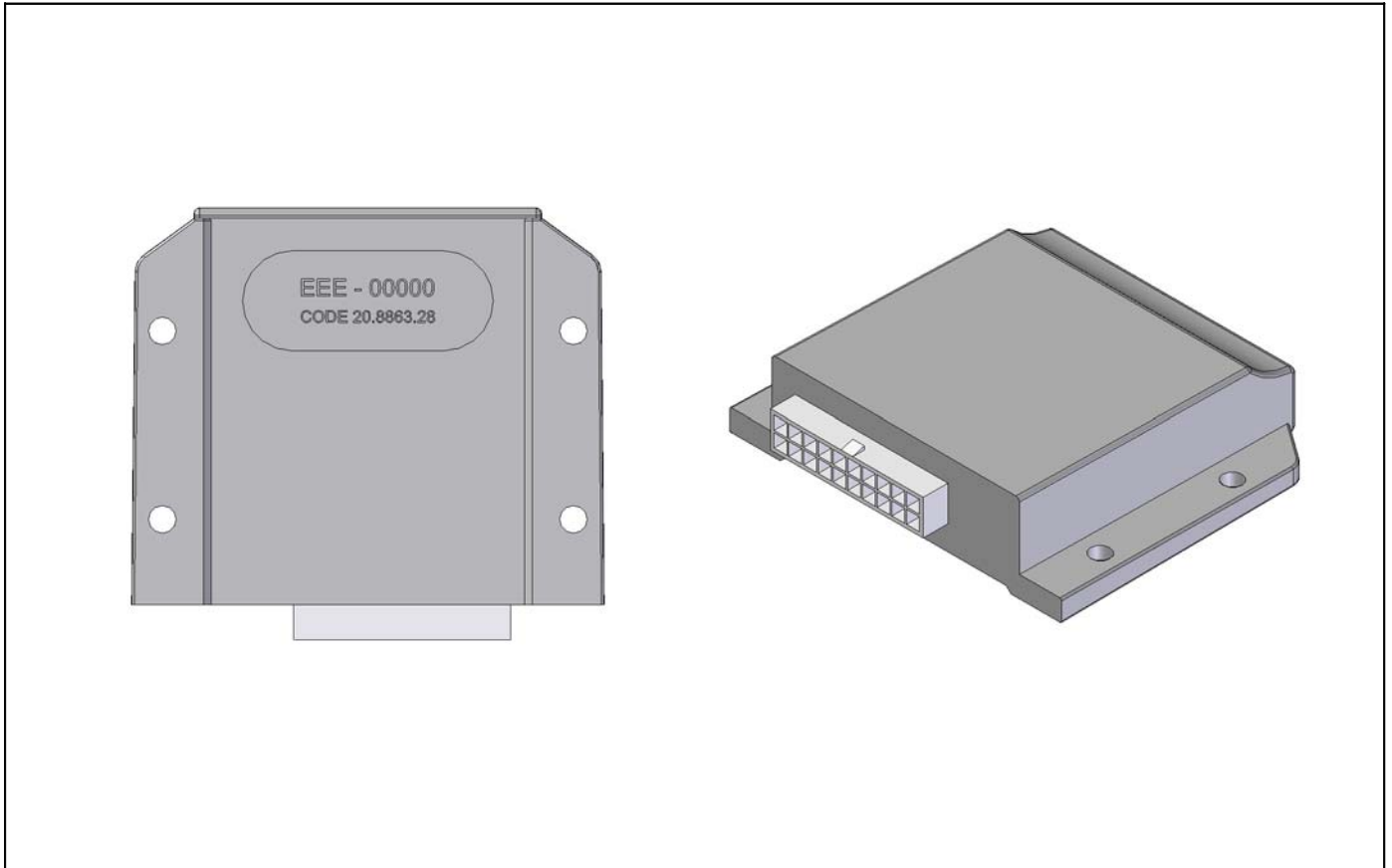
# CARBURATORE

TILLOTSON mod. HL-384 B - GETTO FISSO DEL MASSIMO E REGOLABILE DEL MINIMO

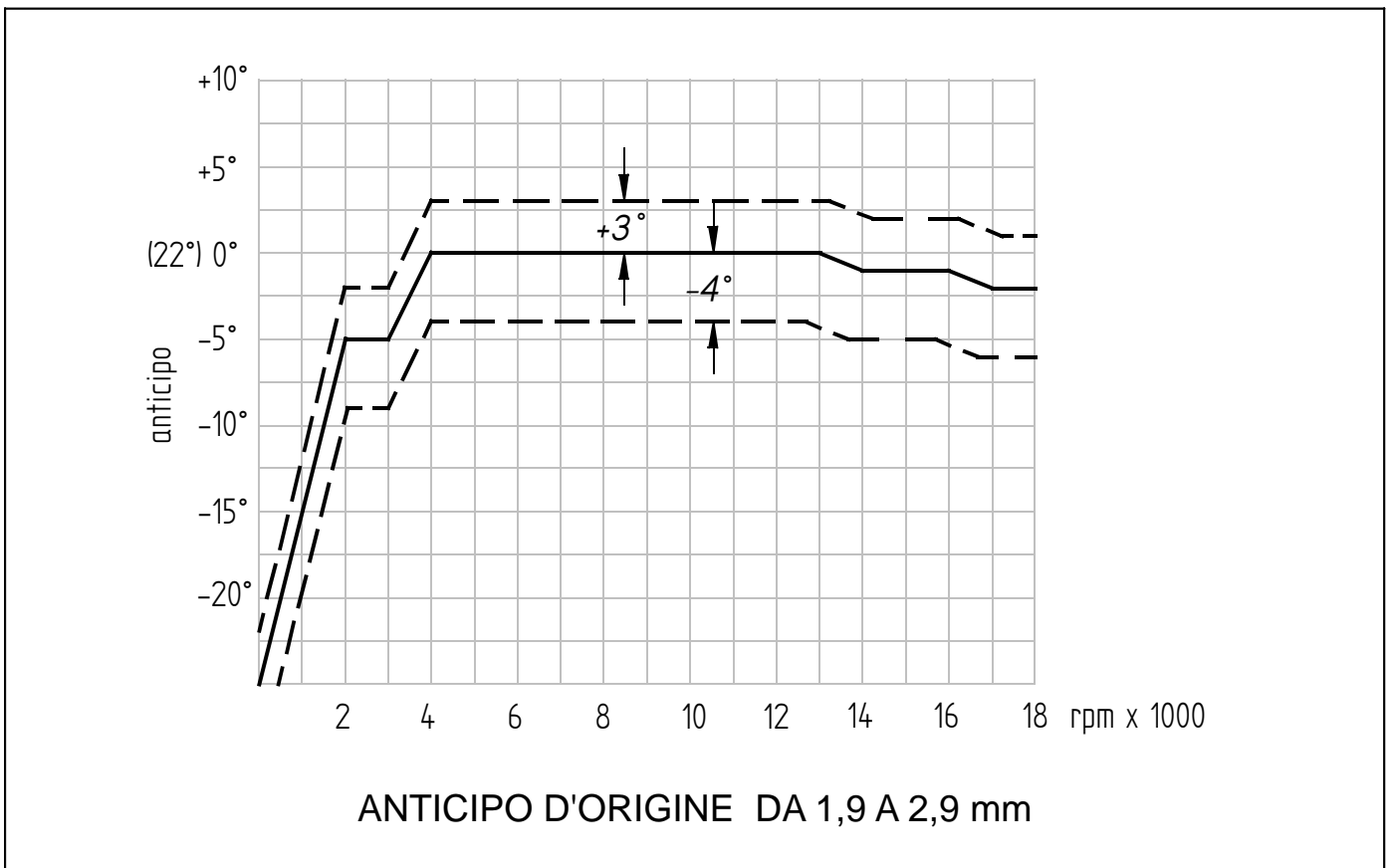


UTILIZZARE ESCLUSIVAMENTE PARTI ORIGINALI  
SONO VIETATE LAVORAZIONI E/O LUCIDATURA DEL CONDOTTO  
L'ASPIRAZIONE DELL'ARIA DEVE AVVENIRE ESCLUSIVAMENTE DALLE PRESE D'ARIA DEL FILTRO

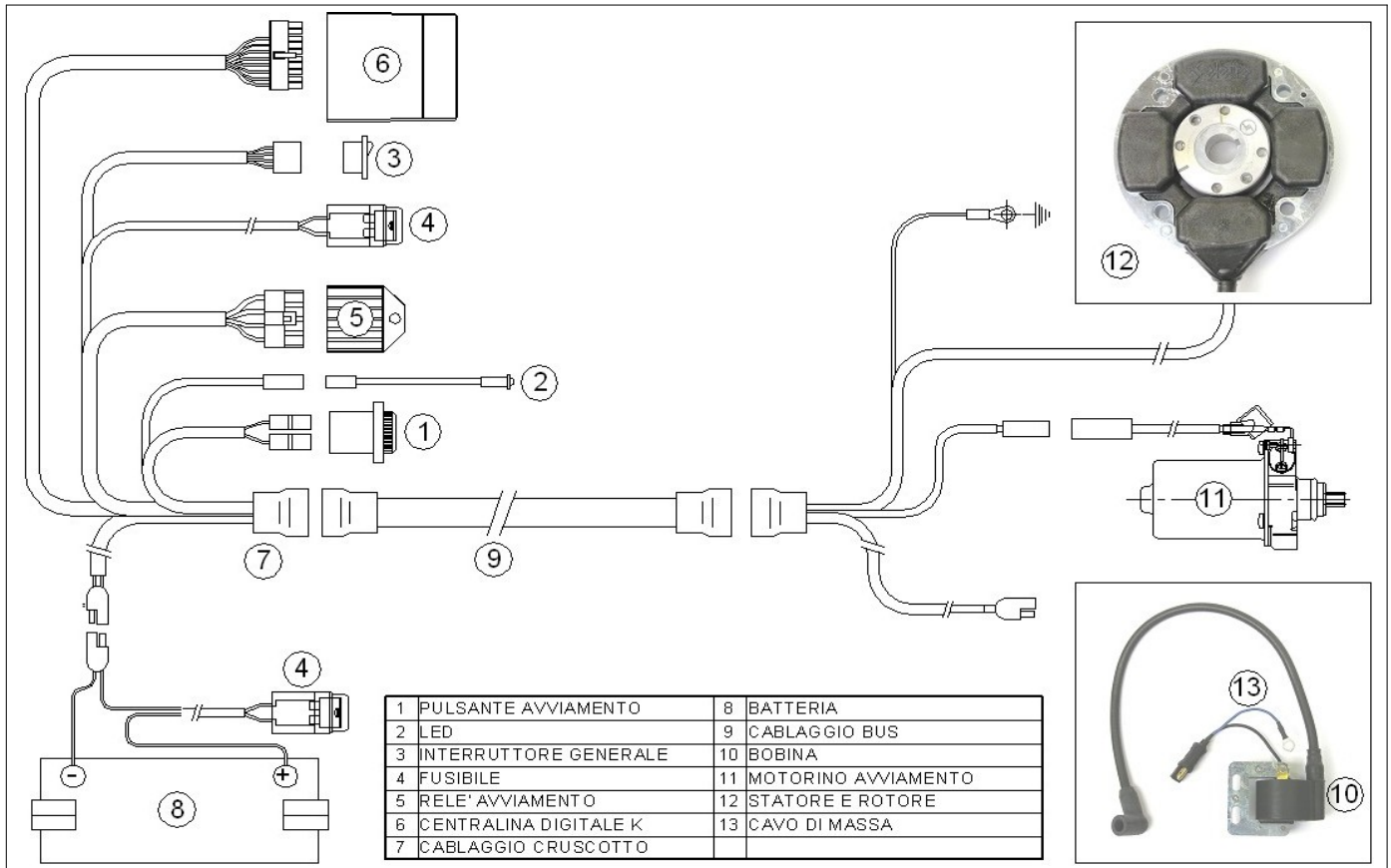
# CENTRALINA



## DIAGRAMMA ANTICIPO ACCENSIONE



# SCHEMA IMPIANTO ELETTRICO



## COLLETTORE e SILENZIATORE DI SCARICO

